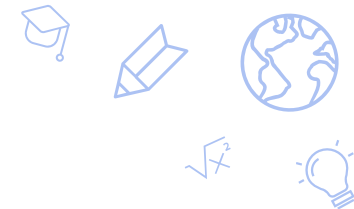




Explore Academy

Ali Taylor - Principal





School Information

- **Grade levels**

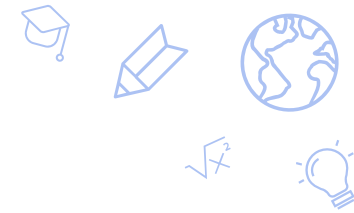
- Serving grades 6-12
- Spring 2024 was first Senior Class
- Received 1-star rating in grades 6-8

- **Student population metrics**

- 47% Hispanic / 19% Black / 11% MultiRacial / 19% White
- 35% Transiency Rate
- 100% Economically Disadvantaged
- Increasing numbers of special populations (EL: 13.8%; SWD: 15.5%)

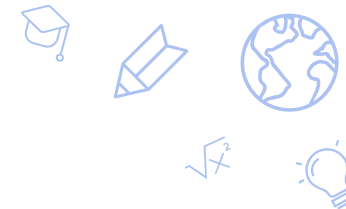
- **Other relevant characteristics or information**

- Short seminars based on subset of standards with focus on proficiency
- Standards-based instruction, assessment and grading



Academic Goals

- Increase ELA performance by 20% from 15.4% to 18.5% as measured by SBAC scores
- Capitalize on last year's 18% growth in math and grow another 20% as measured by SBAC scores
- By WIDA testing in March, 85% of students will meet their growth goals



Measurable Action Steps

- **SBAC**
 - Aligned SBAC blueprint with our standards-aligned curriculum to provide intentional practice and exposure
 - All classes, including electives, have SBAC skills embedded
 - Tracking growth in Math and ELA by IXL and CERT interim testing
- **WIDA**
 - Standards have been aligned with, and embedded into, our standards-aligned curriculum
 - Staff professional development provided to ensure stronger sheltered instruction
 - Tracking progress through coaching logs to have 95% of teachers implementing strategies
- **Family Partnerships**
 - Forums with families to emphasize the importance of WIDA and SBAC testing
 - Tracking attendance rates to forums and eliciting feedback from families quarterly
- **Additional development for**
 - CERT testing and IXL growth measuring progress
 - Observations aligned with specific instructional strategies to support all learners

Thank you!

charterschools.nv.gov

